

Procedures for Use of Sentinel LM7.2 Server for CHEMCAD

Overview

CHEMCAD uses Sentinel LM 7.2 for network license authorization. This document explains installation of the LM7.2 server utility, activation of CHEMCAD licenses, license usage monitoring, and troubleshooting.

Who should read this document?

This document is for administrators installing and activating LM7.2 to authorize CHEMCAD.

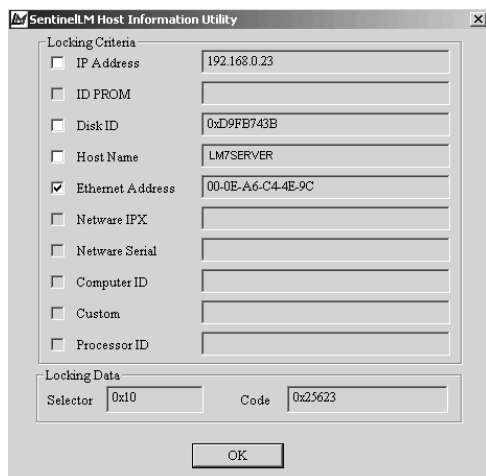
If your organization wishes to use License Commuter, which enables a user to "check out" a network license on a non-networked system, you can obtain the Commuter License Guide documentation by contacting Chemstations Inc. by phone at 713-978-7700, by fax at 713-978-7727, or by e-mail at license@chemstations.com. Please note that the use of License Commuter can result in the loss of a license, in which case the customer, not Chemstations, bears responsibility for replacing the license if needed.

Installation and Activation of LM7.2 Server for CHEMCAD

Obtain *Server.zip* and *Admin.zip* from Chemstations Inc.

1. Install the LM7 server program. The zip file **Server.zip** contains a setup program called **Setup.exe**. Run this file and accept the defaults to install the server program.
2. Copy the administrator tools to the server. The administrator tools are found in the file called **Admin.zip**. Copy them to any directory on your local machine (e.g., c:\LM admin tools).
3. Next you must obtain a server code number. In **Admin.zip**, there is a file called **Wechoid.exe**; run the file from the server computer. You will see a dialog box entitled **SentinelLM Host Information Utility**.

This screen displays details for your computer, and generates locking data, which in turn are used to generate license files for you. Remove the check mark from all fields except **Ethernet Address**, as shown on the figure below.



Locking Criteria	
<input type="checkbox"/> IP Address	192.168.0.23
<input type="checkbox"/> ID PROM	
<input type="checkbox"/> Disk ID	0xD9FE743B
<input type="checkbox"/> Host Name	LM7SERVER
<input checked="" type="checkbox"/> Ethernet Address	00-0E-A6-C4-4E-9C
<input type="checkbox"/> Netware IPX	
<input type="checkbox"/> Netware Serial	
<input type="checkbox"/> Computer ID	
<input type="checkbox"/> Custom	
<input type="checkbox"/> Processor ID	

Locking Data	
Selector	0x10
Code	0x25623

OK

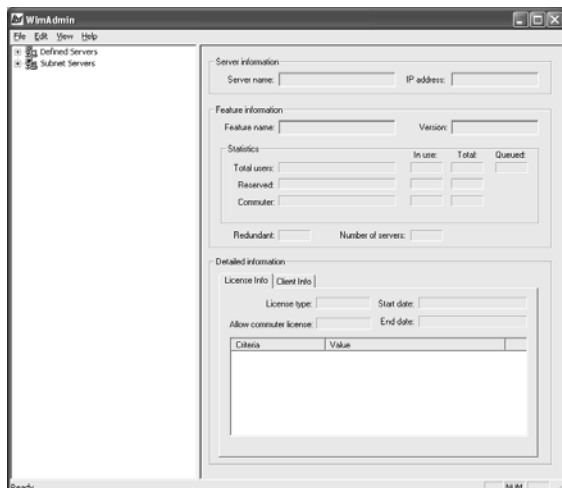
4. Send the values for **Host Name**, **Selector**, and **Code** to Chemstations Inc. The codes will be used to generate licensing files, which will be sent back to you.

For example, for the server shown above, you would send the following data:

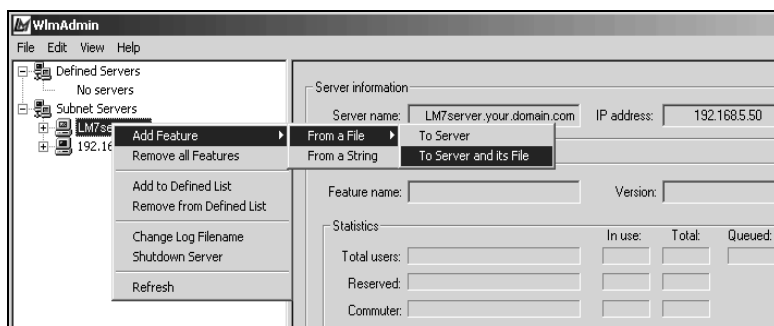
- Host name: LM7server
- Selector: 0x10
- Code: 0x25623.

Activation of LM7.2 Server for CHEMCAD

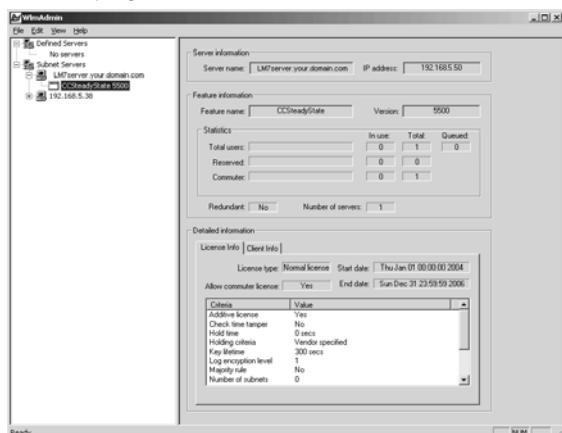
- When you receive the licensing files, save them into the same directory as your administrator tools.
- Run the **WlmAdmin.exe** file to start the WlmAdmin program:



- Expand the **Subnet Servers** list on the left side of the screen until the server number is shown.
- Right-click the server name and select **Add Feature > From a File > To Server and its file**, as shown below:



- The program will prompt you to select a licensing file. Select the licensing file that was sent to you by Chemstations Inc.
- If activation is successful, you should see license(s) under your server name. As you select each license the data will appear in the WlmAdmin program:



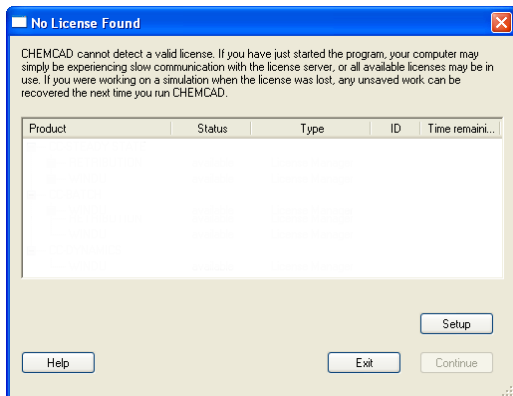
The licenses are now activated. CHEMCAD will be able to take licenses from the LM7 server.

Configuring CHEMCAD Clients to Use the LM7.2 Licenses

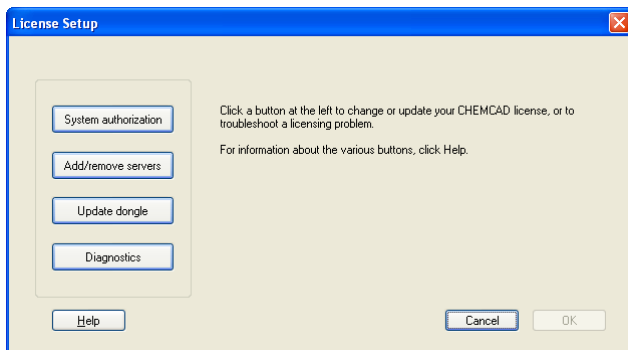
Normally, any system that resides on the same subnet as the License Manager server will obtain a CHEMCAD license automatically, provided one is available.

In some cases, network security measures or other factors can prevent this automatic license assignment from working properly; in this case, a one-time configuration change is required for each CHEMCAD installation. The configuration procedure is as follows:

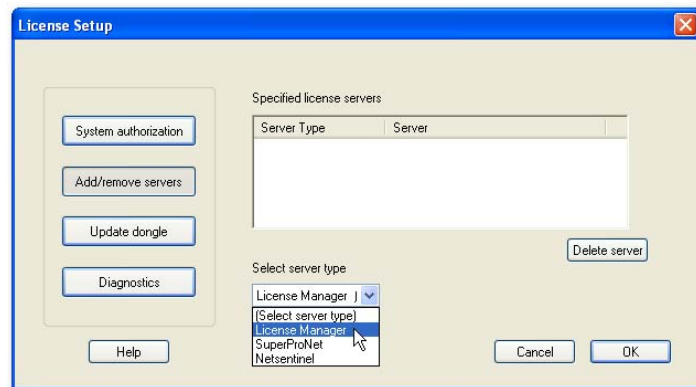
1. Launch the CHEMCAD program and wait for the No License Found dialog box to appear.



2. Click the **Setup** button to bring up the License Setup dialog box.

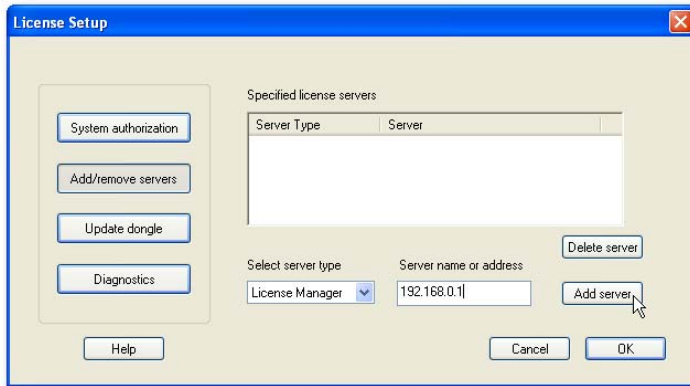


3. Click the **Add/remove servers** button, then select License Manager from the **Select server type** drop-down list.



LICENSE MANAGER VERSION 7.2

- A new field called **Server name or address** now appears. Enter the IP address of the License Manager server into this field and click **Add server**.



- The server address that you entered now appears in the list of **Specified license servers**. Click **OK** to close the License Setup dialog box.
- In the CHEMCAD License Monitor dialog box, the licensed CHEMCAD products will now appear, with License Manager listed as the license type. Click **Continue** to close the dialog box and use CHEMCAD; now, when the user launches the program, the license will be found automatically.

LAN and WAN Configuration for LM7.2 Communication

Chemstations Software permits users to send a network license across their WAN or VPN. We do not charge license fees on a 'per facility' basis.

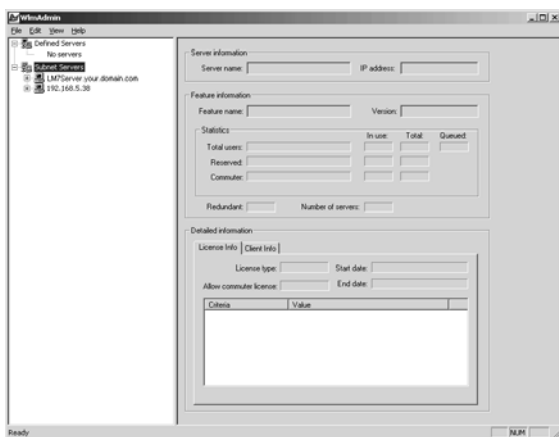
CHEMCAD clients communicate to **UDP port 5093** on the LM7 server computer. For a WAN, this port will need to be opened for connections to the LM server. It is recommended to set 'high priority' to these packets, if network equipment permits this setting. We cannot provide extensive support for configuration of network segments to facilitate WAN license usage.

Please note that Windows XP SP2 and Windows Vista activate the Windows Firewall by default, which may block this port.

Displaying License Availability and Current Users

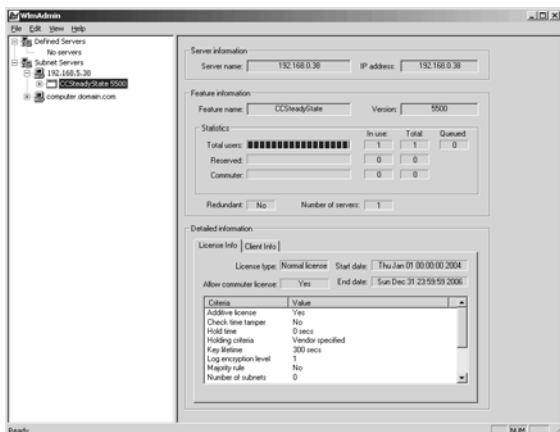
A common question from users is "How do I see who is using our network licenses?" Users can run Wladmin.exe from their workstations to see how many licenses are available and which users are currently using the licenses. This executable file is located in the Admin section of the install. The administrator should distribute the Wladmin.exe to any user who will need to monitor current license status.

- Run WlAdmin.exe from a computer which is connected to the License Manager server.
- Under **Subnet Servers**, find the Chemstations LM server. Depending on network and computer configurations, you may see the IP address or the fully qualified domain name for this computer. In the picture below, two separate computers on the network are running LM7.2 Servers.

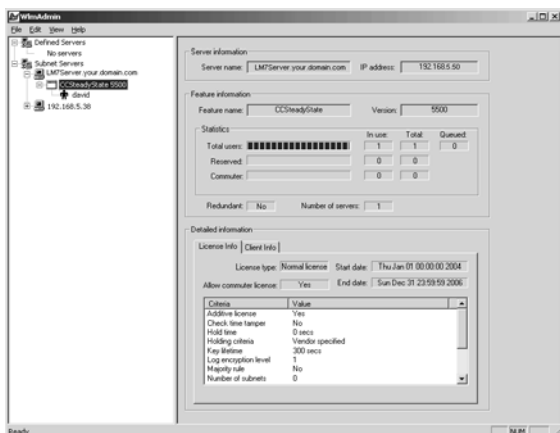


LICENSE MANAGER VERSION 7.2



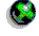








3. A separate item will be listed under the server for each active product license. The server shown below has licenses for CC-STEADY STATE only. Selecting the license will show the number of licenses, and the number currently in use. The server in the picture has one license of CC-STEADY STATE, which is currently in use.





3. Select a license to display current users. The user's login name is displayed. In the picture shown, user *david* is using the license.



The following table lists the description of the icons displayed in WlmAdmin.exe while accessing information from a network server.

Icon	Description
	Refers to Subnet Server/Defined Server display.
	Indicates that Server is running on the specified machine.
	Indicates that server is not available on the selected machine.
	Indicates that license for the particular feature exist on the selected machine
	Indicates that license with selected feature is no longer in use.
	Indicates that client(s) are available for the selected feature.
	Indicates that particular client item is selected for information display.
	Indicates that client no longer exist for the selected feature.
	Indicates that queued client exist for the selected feature.
	Indicates that particular queued client item is selected for information about the queued client
	Indicates that queued client(s) no longer exist for the selected feature

Please note that the icon  gets displayed for non-existent servers, features, and clients when the selected server was expanded for displaying the information and its status has not been refreshed.

In addition to the above, the icon  also gets displayed when any item in the information list control display is collapsed, but the refresh rate is so fast that it might not be visible every time.

Troubleshooting

What is causing this SentinelLM error message?

When you run WlmAdmin.exe at the LM server and try to expand the Subnet Servers on the left, you receive this error message:
SentinelLM: Error [17]: Probably no servers are running on this subnet



This error should only be displayed at the server if the LM7 service is not running. Go to services and verify that the service is started.

How do I verify that the LM7 service is running?

1. On the main Windows menu, select **Start > Run**.
2. Type **Services.msc** and then click **OK**.
3. The Services applet displays. The LM7 service name is SentinelLM, as shown below. Verify that the service is started.

