

## IMPORTING CHEMCAD 4 JOBS IN TO CHEMCAD 5

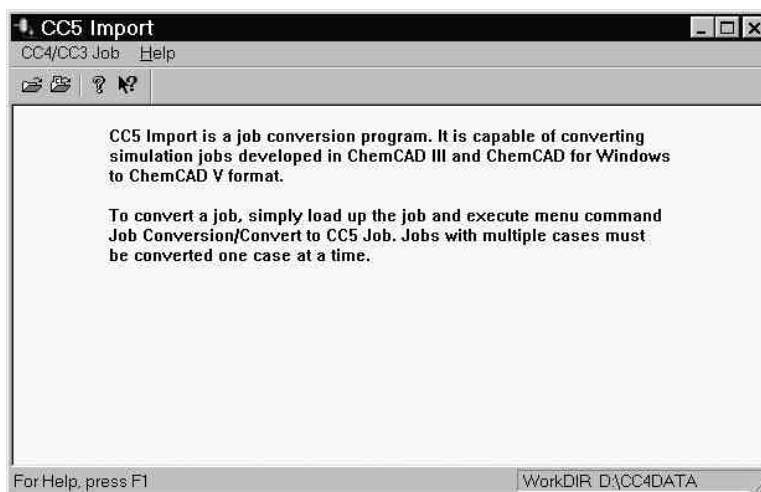
By following this procedure you will be able to import jobs from CHEMCAD 4 and CHEMCAD 3 into CHEMCAD 5. This process will not change your original jobs. Even so, **before you do any kind of import, always make a backup of your original data.**

### STEP 1: START THE SIMULATION IMPORT PROGRAM

---

Select "Simulation Import" from the "Utilities" menu in the "CHEMCAD" program group.

The following program will appear:



### STEP 2: LOAD THE SIMULATION

---

This is accomplished much like it was in CHEMCAD 4. From the "CC3/CC4 Job" menu, click on "Select Job" or on "Load Current" job if you wish to import the current job. You may switch work directories if you wish to import a job in another work directory. After selecting the job, your flowsheet should appear.

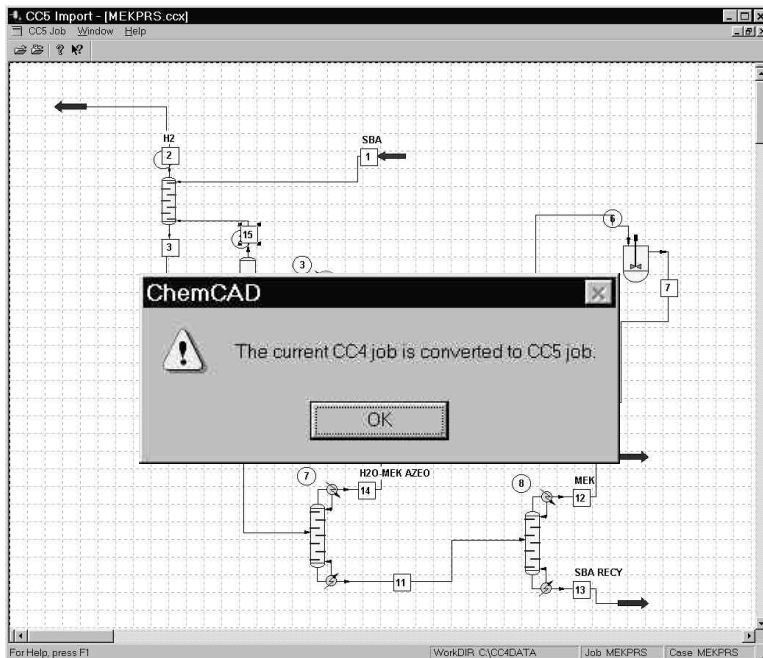
### STEP 3: SELECT A CASE

---

Select a case by using the "Load Case" function in the "CC3/CC4 Job" menu. **The Import program will only import one case at a time.**

#### STEP 4: CONVERT THE CURRENT CASE

Convert the current case by selecting "convert to CC5". A progress meter will appear indicating it is processing. When it has finished processing, a CHEMCAD 5 flowsheet will appear along with a confirmation message:



#### STEP 5: GRAPHICS CLEANUP

The CHEMCAD 5 flowsheet allows you to make any adjustments to the position and size of objects in your converted case. When you are finished, close the CC5 job. Now you may either load a new case to convert, or close the CC4 job so that you may load another.

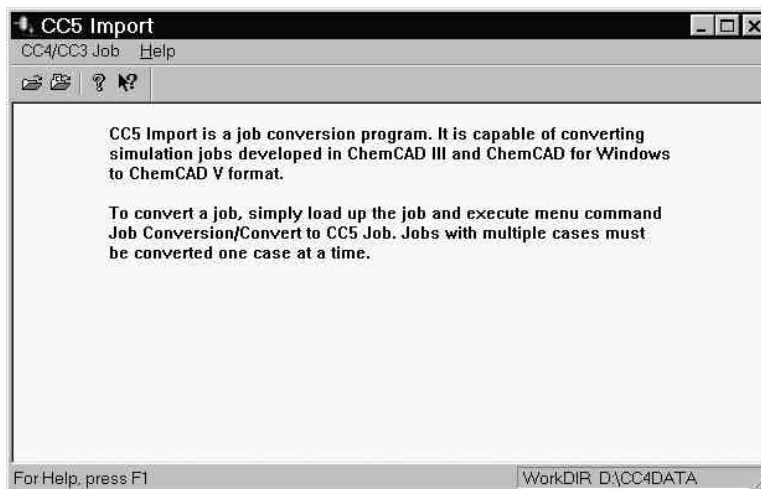
## IMPORTING CHEMCAD 3 JOBS IN TO CHEMCAD 5

To import CHEMCAD 3 jobs into CHEMCAD 5, you must first convert the CHEMCAD 3 job to CHEMCAD 4, then proceed as for a CHEMCAD 4 simulation. **Before you do any kind of import, always make a backup of your original data.**

### STEP 1: START THE SIMULATION IMPORT PROGRAM

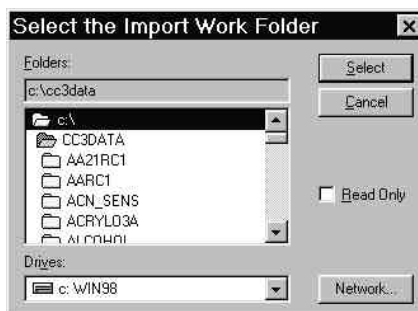
Select "Simulation Import" from the "Utilities" menu in the "CHEMCAD" program group.

The following program will appear:



### STEP 2: SELECT THE IMPORT DIRECTORY

This is accomplished much like it was in CHEMCAD 4. From the "CC3/CC4 Job" menu, click on "Import Job". A dialog asking for the import folder will appear:



Once you have selected your CC3DATA (or similar) directory, Simulation Import will scan this directory looking for chemcad 3 simulations.

### STEP 3: SELECT THE JOB FOR IMPORTING

---

Now select which job you wish to import to your CC4 work directory:



After selecting a Simulation to import, the program will return to this menu allowing you to choose another. When you are finished, press the Cancel button to return to the Simulation Import program

### STEP 4: PROCEED TO CONVERT THE CHEMCAD 4 SIMULATION TO CHEMCAD 5

---

Please refer to the section of this document "Importing CHEMCAD 4 Jobs in to CHEMCAD 5"